

For further information, downloads, inspirational stories, videos, features and much more visit:

buddy roomer™

Buddy Walkabout Instruction Manual

Recommended for Indoor Use only.

Moorings Mediquip
51 Slaght Road
Ballymena
Co. Antrim
United Kingdom
BT42 2JH

Tel: +44(0) 28 2563 2777
Fax: +44(0) 28 2563 2272
www.mooringsmediquip.com

Version 4.2



The **Buddy Walkabout™** is a posterior walking aid that provides partial weight bearing postural support with mobility.

The ergonomically designed frame supports body weight while allowing the child to walk around freely and unaided.

This manual will show you how to easily set-up the walker for first use and the adjustments available to enable full functionality of the device. Before assembly please read the safety, information notices to ensure the **Buddy Walkabout™** is used effectively.

Declaration of Conformity

Moorings Mediquip as manufacturer declares that the **Buddy Walkabout™** walking aid conforms to the requirements of 93/42/EEC Medical Device Directive.

Terms of Warranty

The warranty applies only when the product is used according to the specified conditions and for the intended purposes, following all manufacturers' recommendations. A One-year warranty is provided with all **Buddy Walkabout™** walking aids.

CONTENTS

01. Safety Information
02. First Assembly
03. Measurements
04. Adjustments
05. Additional Features
06. Accessories
07. Maintenance
08. Care and Cleaning
09. Technical information

09 Technical Information

Buddy WALKABOUT TECHNICAL INFORMATION

Measurements	Width	Length	Height	Weight
Buggy in Use	530mm	560mm	1120mm/Max	6.5Kg
Folded	530mm	560mm	270mm	6.5Kg
Boxed	535mm	620mm	290mm	7.9Kg

Buddy WALKABOUT DISMANTLED IN 2 PARTS.

Measurements	Width	Length	Height	Weight
Base only	530mm	560mm	260mm	3 Kg
Column only	90mm	590mm	220mm	3.5Kg

Headrest Height

Max Height 1120mm Min Height 520mm

Lateral Support Width

Max Width 220mm Min Width 150mm

MAX Weight not to Exceed 30KG.

Date of Manufacture -

07 Maintenance

Daily

The following checks should be carried out by therapists, carers or parents to ensure the **Buddy Walkabout™** is safe for use.

1. Check that all parts are Present and in good condition. Check all Cap Covers are in place with no Screw heads visible.
2. Ensure all adjustment screws, including the plastic clamps, central positioning bar, lateral supports and headrest are fully tightened before use.
3. Perform a functional check of the parking brake, Directional Lock and anti-roll-back lock (if supplied) to ensure they are in full working order.

Weekly

1. Check of all screw connections to ensure none have come loose.
2. Check all upholstery for signs of wear and tear.
3. Check all Velcro straps and brush off any fluff build up to ensure straps secure correctly.

08 Cleaning and care

1. The upholstery and fabrics can be cleaned by hand while still in place using warm water and a non-abrasive detergent.
2. Ordinary soiling and spillages should be removed as soon as possible using soap and warm water.
3. Metal or plastic components can be cleaned using a damp cloth or soap and water if necessary.

Always ensure product is completely dry before use.

DO NOT use organic solvents or dry-cleaning fluids on any part of the Buddy Walkabout™. Regular cleaning and maintenance will increase the lifespan of the **Buddy Walkabout**.

01 Safety information

All instructions in this manual should be read fully before use.

The maximum user weight for the **Buddy Walkabout™** is 30Kg. This weight limit must not be exceeded.

Users should not be left unattended at any time while using the **Buddy Walkabout™**. All assembly and adjustments to be completed by a Competent adult or Engineer.

Only use Moorings Mediquip approved components with the walker. Never modify the device in anyway. Doing so may put the user at risk and will invalidate the warranty.

If any product defects become obvious or if any parts should fail, discontinue use immediately and contact your local dealer as soon as possible to rectify them.

All positional adjustments should be made before the user is put into the walker. All adjustment bolts, grip knobs and straps must be securely fastened again before use.

The **Buddy Walkabout™** should be kept away from all direct sources of heat including naked flames, cigarettes, heaters and radiators. When not in use the walker should be stored in a dry place that is not subject to extremes of temperature.

Follow all daily, weekly and annual product inspections. (See maintenance (07) section of this manual)

Please keep all plastic packaging material away from children as plastic packaging can present the danger of suffocation.

Clean the **Buddy Walkabout™** regularly using only standard household cleaning agents. DO NOT use abrasive cleaners.

02 First assembly

Contents of the box:

- 1) Base frame Assembly
- 2) Column with Laterals attached
- 3) Central Positioning Bar
- 4) User Manual
- 5) Serial Number Attached to Frame
- 6) Allen Keys

N/B -It is recommended to keep Box for easy Storage or Travel arrangements.

(4mm and 5mm Allen key provided in the plastic bag with this manual)

Step 1

Unpack the Base frame assembly and place on a flat surface as shown.



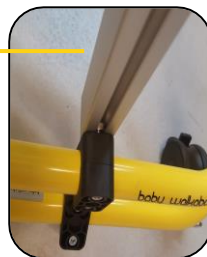
Step 2

Loosen all of the socket screws using the 5mm Allen key provided and slide Column into the slot stone. Ensure both Slot stones are inserted into column.



Step 3

Ensure black clamps are in centre of Walkabout Frame and Column at proper height before clamps are tightened.



Accessories

Shoulder Straps 06

This accessory will be mounted off a horizontal bar attached to the front profile extrusion (Photo 1) It will help hold the user's shoulders in the correct position while in use. These are adjustable in height, width and angle to deal with different size variations.

Photo 1



Shoulder Straps 06



Step 4 04

Central Positioning Bar Adjustment

Loosen each of the socket screws on the back of the CPB. This allows the CPB to be raised or lowered along the extrusion track.



Ensure all Screws are tightened After adjustments.

Step 5

Loosen 2 screws of headrest bar and adjust by sliding bar up or down extrusion track to preferred position. Tighten screws when complete.



Ensure all screws are tightened after adjustment.

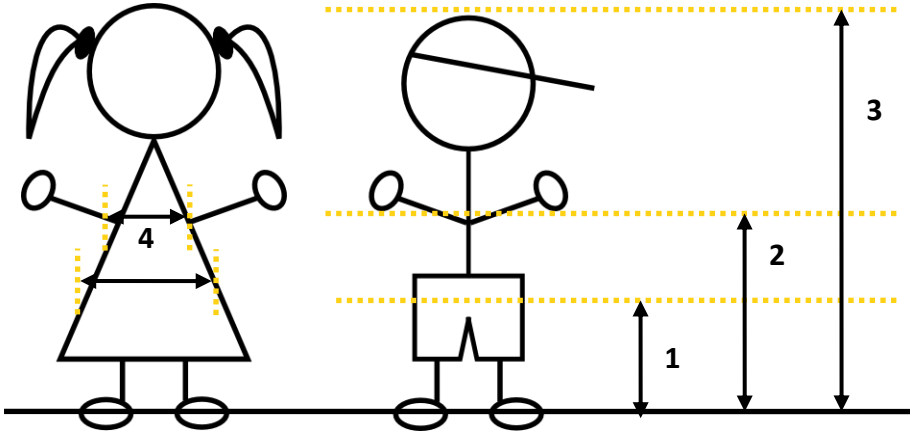
Reverse these instructions for Storage purpose if applicable.

See below of how **Buddy Walkabout** should now look.



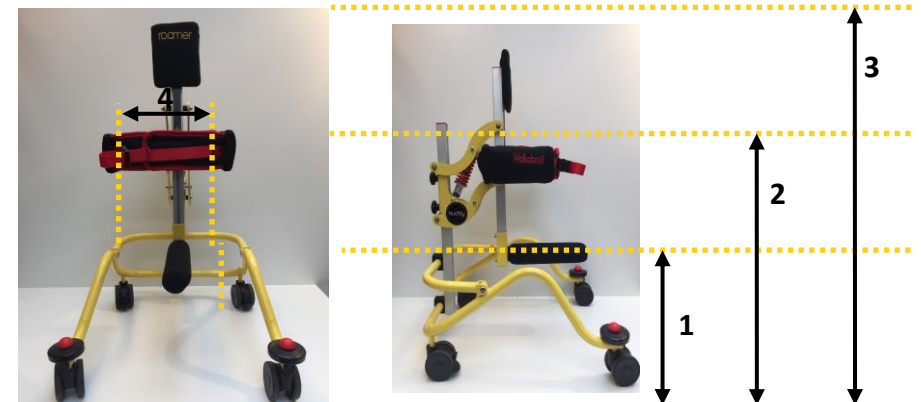
03 Measurements

For each child the following measurements should be taken and recorded in the table below:



	Measurement	Value (cm / inch)
1	Inside Leg	
2	Underarm	
3	Overall height	
4	Chest Width	

These values correspond to the following adjustments on the walker; these adjustments should be set to the correct value before use:



Lateral Belt Information

04

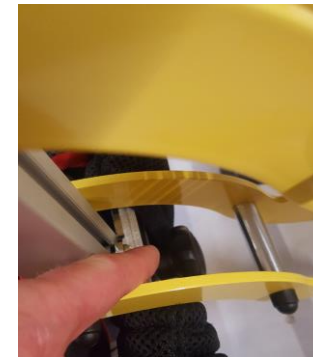
Adjustments to Lateral Belts Step 6

1. Open Buckle at Front of Belt. Photo 1
2. Loosen Bolt at Back of Laterals and Open out to adjust width. Photo 2
3. Adjust height by sliding up or down Extrusion track. And tighten bolt.

1



2



Careful of moving Parts when adjusting.

Other Information 05

Apply Brake on Back Wheel by Pushing down on pedal. Photo 1

Wheel Anti-Lock released by pulling out and turning the Metal Nut at back.
To lock just turn back and slot into position. Photo 2

1



2



Please take a note of the Serial number of your Product and keep it in the box below. You will find it on the base Frame. This will help with any queries should they arise.

S/N -

Adjustments to height.

This can be done by loosening the 2 Knobs shown in photo 1. Slide to position up or down then tighten knobs.



Do not Extend over the Extrusion Bar.

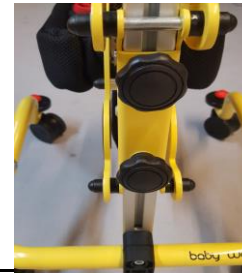


Photo 1

Problem Solving.

1 Wheels at back are locked?

- Release Brake as stated in Section 05 Photo 1

2 Wheels at Back will not Rotate?

- Release Pin on rear wheel as shown Section 5 Photo 2

3 Abnormal movement of Components?

- Ensure all Knobs/Bolts are tight and secure.