

sling seat

Installation Instructions

meywalk®4 · meywalk®2000 · miniwalk®



meywalk®2000



meywalk®4



miniwalk®

meyland-smith
mobility and more

Mounting of cross bar on miniwalk and meywalk®2000



miniwalk and meywalk 2000 consist of a top and bottom part. To use the sling seat, replace the seat bar (A) with the cross bar (B).

Start lifting the top off from bottom part. Lay the top part on a flat surface on a blanket to avoid scratches.

Then loosen the lower allen bolt and lower spanner grip on both sides. Use the largest of the allen keys to loosen the allen bolt.

A seat belt



B cross bar



conus

spanner grip



allen key



spanner grip



the allen key is located in the saddle



conus



Then follow the 8 steps as shown below

1



Remove the internal height adjustment tube, allen bolt and spanner grip

2



Loosen the two cones on each side and remove the seat bar

5



Mount the new cross bar with the same parts as used for the seat bar. Then tighten spanner grips and allen bolts

6



Reassemble the internal height adjustment tube, allen bolt and spanner grip as shown in the picture

7



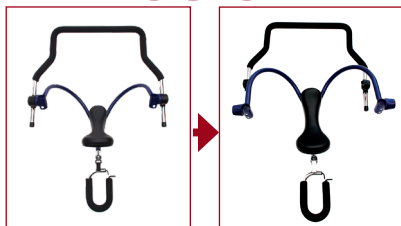
Tighten all allen bolts and spanner grips

8



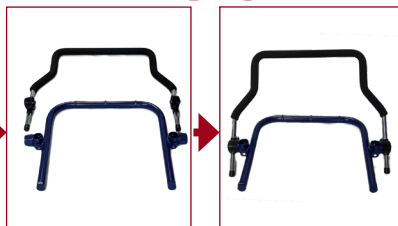
Lift the top of the walker back into place

3a-b



Loosen the two cones further and separate the handle bar from the seat bar

4a-b



Attach the cross bar (B) to the handle bar and tighten the two cones

meyland-smith
mobility and more

Mounting of bracket on sling seat on meywalk®4



To use the sling seat, the seat bar (A) must be removed.

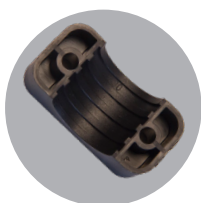
This is done by loosening the lower of the handles on the center box.



Included:



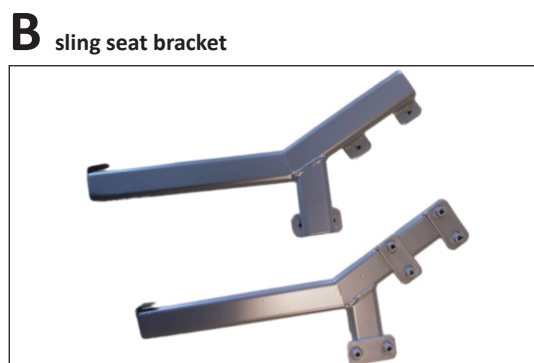
allen bolt
12 pcs



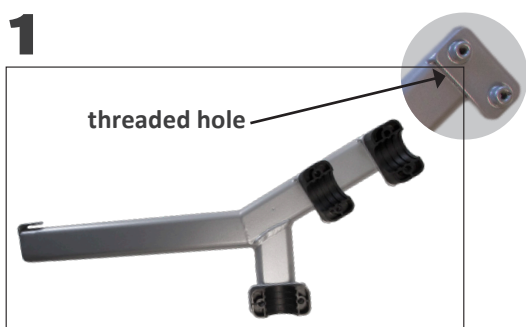
clamp
6 pairs



allen key
(located in the saddle)



Then follow the 3 steps as shown below



Place one part of the clamp onto the threaded holes on the bracket (as shown on the picture)

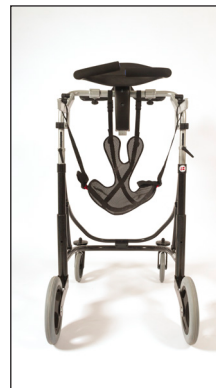


Now mount the sling seat bracket on each side of the walker using clamps and allen bolts. Make sure they are at the same height.



Now both brackets are mounted and are in the same height. CHECK THAT ALL BOLTS ARE TIGHTENED!

How to mount the sling seat



Mounting sling seat on miniwalk and meywalk 2000

A

Secure the two front buckles before the user enters the walker (1.)

B

Place the user in the walker (2.)

C

Perform the rest of the mounting as shown (3.-5.)

D

Adjust the straps so that the sling seat is loose and not tight around the behind of the user (6.)

The sling seat is mounted on the front of the cross bar with the two straps



The two rear straps of the sling seat are passed between the user's legs and put on the two arms of the cross bar



Adjust the height of the sling seat and make sure that the two front buckles are locked and the rear straps secured on the cross bar.



The sling seat is available for the following models:

	Item number
meywalk 4® micro	011804
meywalk 4® mini	011805 (incl. brackets)
meywalk 4® small	
meywalk 4® medium (red)	011800 (incl. brackets)
meywalk 4® large (black)	
meywalk 2000® medium	104790 (incl. brackets)
meywalk 2000® large	
meywalk 2000® small	
miniwalk® (size 1)	106086 (incl. brackets)
miniwalk® (size 2)	

meyland-smith
mobility and more

Meyland-smith A/S
Mads Clausens Vej 1
DK-9800 Hjørring

telefon: +45 98 96 19 85
e-mail: info@meyland-smith.dk
web: www.meyland-smith.dk