

## Dignity by Design. Built for Accessible Spaces.

Everyone deserves access to safe, dignified, and fully accessible bathroom spaces—regardless of ability. The NextGen Wall Mount Change Table was created to support this vision, offering a thoughtfully engineered solution where comfort, safety, and independence come first.

Developed through collaboration across multiple disciplines—including end users, caregivers, accessibility specialists, designers, engineers, and architects—the NextGen Wall Mount Change Table reflects a deep commitment to accessible design. Every detail has been carefully considered, from ergonomic height adjustment to intuitive controls that remain within reach. This ensures that individuals with limited mobility can transfer safely and care for their hygiene needs with greater independence, while caregivers benefit from ease of use and reduced physical strain.

Designed for use in public buildings, schools, and care facilities, the table meets provincial and national building codes, along with all relevant safety compliance standards. It integrates seamlessly into a wide range of environments, helping create spaces where everyone can participate fully and with dignity.

The NextGen Wall Mount Change Table is more than just a fixture—it's a meaningful step toward accessibility, inclusion, and equality for all.

## Key Features

- Available in 2 sizes, 1575mm x 711mm (62" x 28") and 1830mm x 762mm (72" x 30")
- Wall mounted, foldable design for compact storage when not in use
- Electrically height-adjustable from 435mm (17.14") to 894mm (35.2") via two user control switches—ensuring height adjustment is always within reach (Figure A)
- Supports up to 250 kg (550 lbs)
- Complies to **CSA B651:23, NBC, OBC 3.8**
- Table, including electrical components, is certified by INTERTEK and meets **UL 73** and **CSA C22.2 No.68**
- Waterproof electrical system (**IPX6**)
- Non-porous solid phenolic flat lying surface—sanitary and easy to clean
- Folding solid phenolic side rail with hand holds to assist user and caregiver hygiene routines



## Benefits

- Low height adjustable starting point allows for safe independent transfers, promoting independent lifestyles for individuals with mobility constraints, their families and caregivers
- Power height adjustment reduces physical strain on caregiver, decreases injuries and improves care
- Two user control switches, ensures that the controls are accessible and always within reach of the user and caregiver
- Solid phenolic surfaces are easy to clean, non-porous, and resistant to damage from chemical cleaners and moisture
- The table can be locked in the upright folded position using the optional locking pull pin or add a padlock to secure and safely store table in folded position
- Easy to install
- When the wall structure is not suitable for installation, the optional floor stand can be installed to shift the load to the floor

## Features

- Two user control switches (Figure A on reverse)
- Gas spring assisted fold, for compact storage (Figure B)
- Side rail featuring integrated hand holds for added safety and positioning assistance (Figure C)



Figure B



Figure C

## Available Options



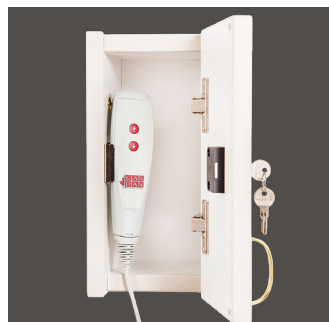
### Standard Mattress

1" vinyl mattress for added user comfort



### Grace Mattress

1" Dual density mattress



### Lockboxes

For secure hand control storage. Carry bar (lift solution) lockbox also available (not pictured).



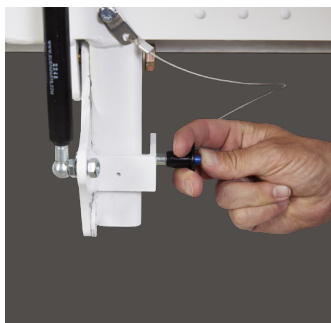
### Safety Belts

Safety belt(s) for positioning



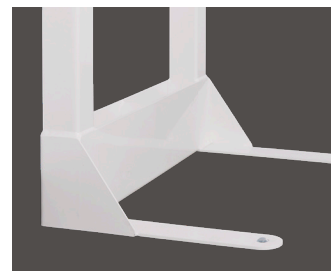
### Hand Control

Hand controller for added versatility



### Locking Pin

Locking pin to secure in upright folded position



### Floor Stand

Installation without wall reinforcement, using the Can-Dan Floor Stand (P/N 20-24-FL)